

Item No.	DESCRIPTION	Quantity	Unit	MATERIALS		LABOR/EQUIPMENT		DIRECT COST	
				Unit Cost	Amount	Unit Cost	Amount	Unit Cost	Amount
3.00	DISCHARGE LINE ASSEMBLY TO MAINLINE								
3.10	18mm thk. x 400mm x 400mm steel plate with 150mm dia. fabricated elbow on the center with ring flange for discharge line (well seal)	1.00	assy					0.00	0.00
3.20	150mm dia. sleeve type coupling with harness	2.00	pcs.					0.00	0.00
3.30	150mm dia. flow meter	1.00	pc.					0.00	0.00
3.40	25mm dia. air release valve (plastic)	1.00	pc.					0.00	0.00
3.50	150mm dia. check valve with counterweight	1.00	pc.					0.00	0.00
3.60	0-200 psi pressure switch guage transmitter sensor	1.00	aasy					0.00	0.00
3.70	150mm dia. butterfly valve with handwheel	2.00	pcs.					0.00	0.00
3.80	150mm dia. sleeve type coupling (gi to gi)	1.00	pc.					0.00	0.00
3.90	150mm x 150mm dia. mech. tee	1.00	pc.					0.00	0.00
3.9.10	150mm dia. BI seamless pipe test line with orifice plate, 10mm dia. Manometer hose tap	1.00-1.50m	assy					0.00	0.00
3.9.20	19mm dia. hose bibb	1.00	assy					0.00	0.00
3.9.30	150mm x 45deg CI elbow (weldable)	4.00	pcs.					0.00	0.00
3.9.40	150mm x 150mm CI reducer	1.00	pc.					0.00	0.00
3.9.50	150mm dia.x 3.00m BI seamless pipe schedule 40	6.00	pcs.					0.00	0.00
3.9.60	0.20m x 0.20m x 1.80m concrete pedestal (see detail)	4.00	sets					0.00	0.00
3.9.70	Consumables, Labor cost, testing	1.00	lot						0.00
	Total 3								0.00
4.00	CHLORINATION								
4.10	Chloronitor Motor: Beta BT4b 0708 PVM 2000UA010000 7.10 lph at 7 bars (102 psi), 1-phase, 100-230 v 50/60Hz, 16 watts, IP 66, stroke rate: 180 spm PVDF material of dosing head; with Pure Teflon Diaphragm for Chlorine Dioxide use; with 2 functions setting for dosing pump rate adjustment via Stroke Frequencies from 0-180 spm and Stroke Length adjustments from 0-100% with increments of 10% ratings; with ready available input connections and controls for 2 Stage Level Float Switch and External control via contact or pulse; complete with standard accessories like - Foot valve w/strainer, PVT - Injection Valve, PVT - 5 meters PE (Discharge) tubing, 8mm x 5mm - 2 meters. Soft PVC (Suction) tubing, 8mm x 5 mm. Made in Germany Chemical Tank, 100-liter capacity made of transparent UV-stabilized PE material; with liter and gallon scale; mounting flange with integral sintered threaded bushes for manual or electric stirrers/mixers; with lockable screw crap cover and key; with drain plug. Size 500mm diameter x 760mm Ht. Est. Wt.: 10 kgs. PN:1001490. Made in Germany	1.00	set						0.00
4.20	Installation, testing	1.00	lot		0.00			0.00	0.00

Item No.	DESCRIPTION	Quantity	Unit	MATERIALS		LABOR/EQUIPMENT		DIRECT COST	
				Unit Cost	Amount	Unit Cost	Amount	Unit Cost	Amount
	Total 5								0.00
	ESTIMATED DIRECT COST								0.00
	OCM (___% of EDC)								0.00
	PROFIT (___% of EDC)								0.00
	VAT (___%)								
	TOTAL CONSTRUCTION COST								0.00

Prepared and Recommended By:

AR. ROCKY M. DUNGCA, Uap

Division Manager

Planning and Development

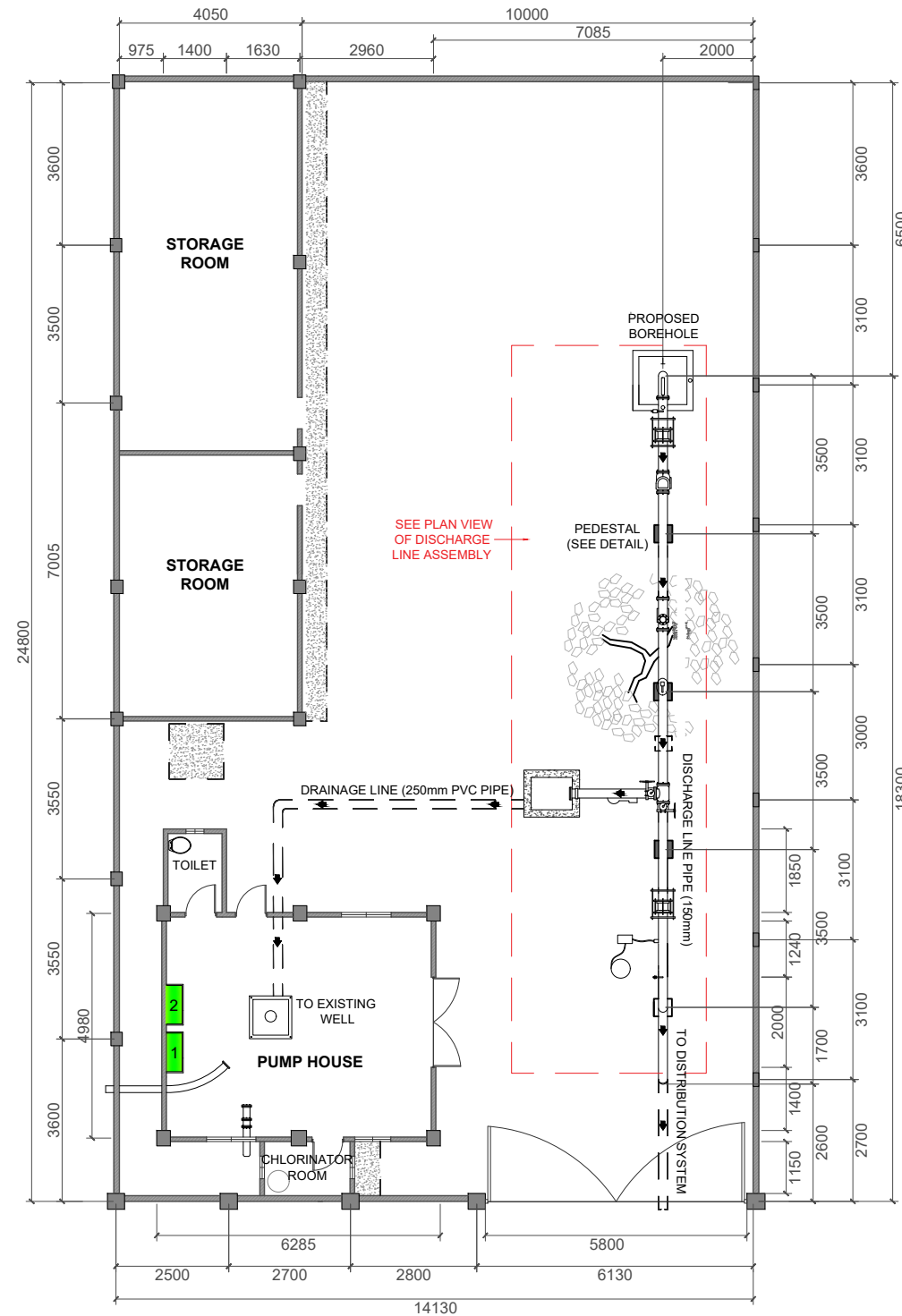
Approved By:

ENGR. NELSON G. LINGAT

General Manager


TABLE OF CONTENTS

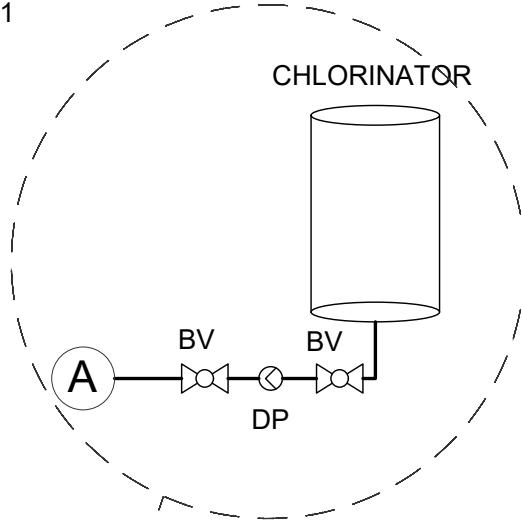
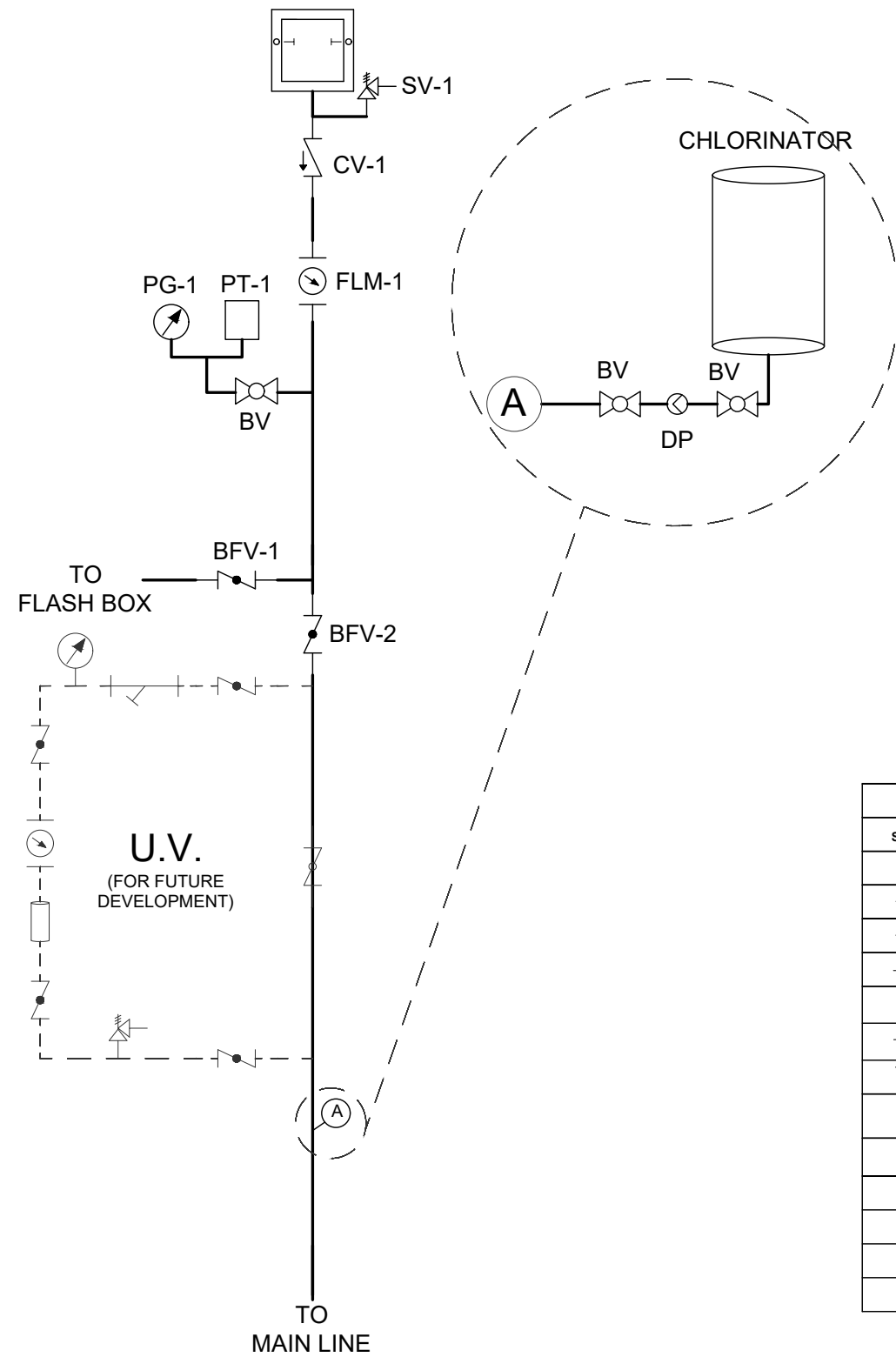
MECHANICAL	
M-1	PROPOSED SYSTEM LAYOUT
M-2	ELECTRO MECHANICAL LAYOUT & DIAGRAM
M-3	DISCHARGE LINE ASSEMBLY
STRUCTURAL	
S-1	SPLASH BOX & CONCRETE PEDESTAL DETAIL




PROPOSED SYSTEM LAYOUT
 SCALE: 1:150

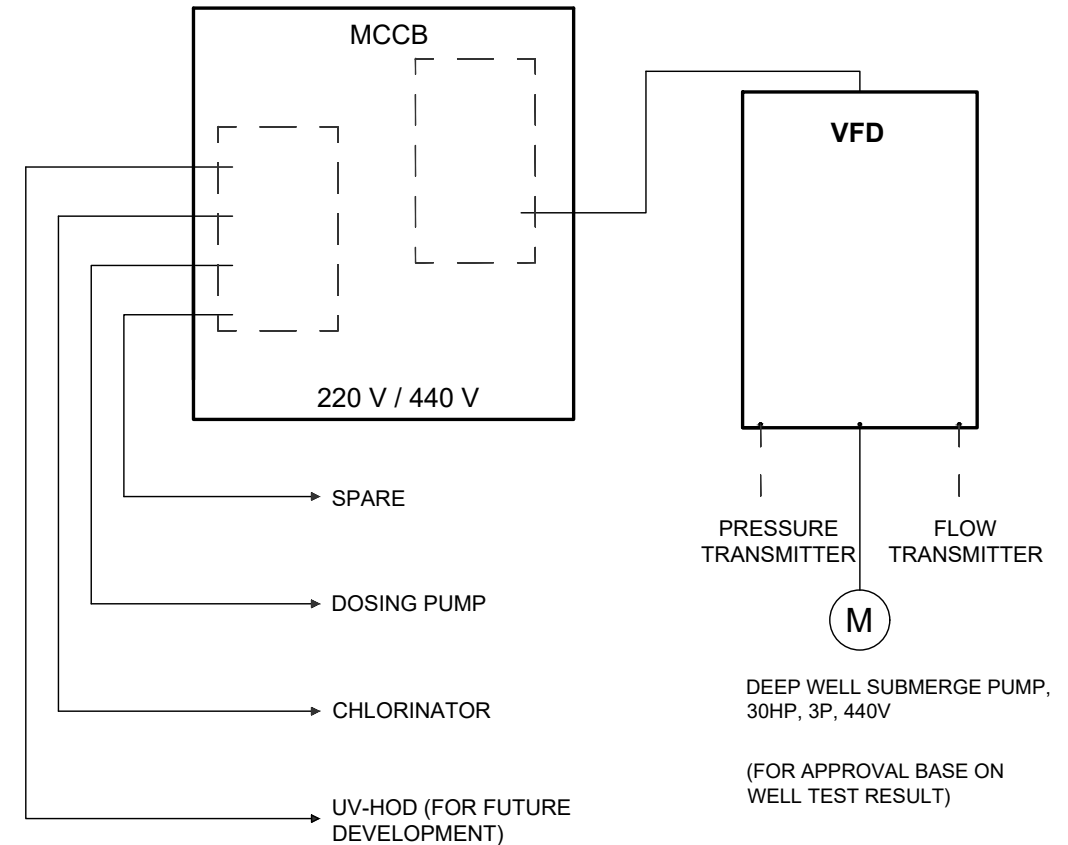
LEGEND:	
1	V F D
2	M C C B

 <p>CITY OF SAN FERNANDO WATER DISTRICT B. MENDOZA ST., STO. ROSARIO, CITY OF SANFERNANDO, PAMPANGA</p>	ENGINEER: JOSE S. GALICIA JR., RME ENGINEER <small>PRC NO: 0078960 DATE: 01-05-2026 PTR NO: _____ PLACE: OFFICE SAN FERNANDO, PAMPANGA</small>	THESE DRAWINGS AND SPECIFICATIONS, AS INSTRUMENTS OF SERVICE, ARE THE INTELLECTUAL PROPERTY AND DOCUMENTS OF THE ARCHITECT. ANY UNAUTHORIZED DUPLICATION OR REPRODUCTION, IN WHOLE OR IN PART, WITHOUT THE WRITTEN CONSENT OF THE ARCHITECT IS STRICTLY PROHIBITED. R.A. 9266, ART IV SEC 33.	PROJECT NAME: PROPOSED SYSTEM LAYOUT	RECOMMENDED: AR. ROCKY M. DUNGCA DIVISION MANAGER PLANNING AND DEVELOPMENT DIVISION	APPROVED: ENGR. NELSON G. LINGAT, DPA GENERAL MANAGER CITY OF SAN FERNANDO WATER DISTRICT	REVISION: <table border="1"> <tr><td> </td><td> </td></tr> <tr><td> </td><td> </td></tr> </table>					SHEET CONTENT: PROPOSED SYSTEM LAYOUT & TABLE OF CONTENTS	CAD BY: DESIGNED BY: CHECKED BY: DATE:	SHEET NO. 1 M-1
	DIVISION: PLANNING & DEVELOPMENT		LOCATION: RAMAR VILLAGE, CITY OF SAN FERNANDO, PAMPANGA	ADDRESS: B. MENDOZA STREET, BRGY. SANTO ROSARIO, CSFP	ADDRESS: B. MENDOZA STREET, BRGY. SANTO ROSARIO, CSFP	DESIGNED BY:	CHECKED BY:	DATE:					



LEGEND	
SYMBOL	DESCRIPTION
	BALL VALVE
	BUTTERFLY VALVE
	CHECK VALVE
	GEAR OPERATED BUTTERFLY VALVE
	AIR RELEASE / SAFETY VALVE
	DIGITAL FLOW METER
	STRAINER
	PRESSURE TRANSMITTER
	DOSING PUMP
	INJECTION POINT
	BOOSTER PUMP
	PRESSURE GAUGE
	UV WATER DISINFECTION

ELECTRO-MECHANICAL LAYOUT
NOT TO SCALE



ELECTRO-MECHANICAL DIAGRAM
NOT TO SCALE



ENGINEER:
JOSE S. GALICIA JR., RME
ENGINEER
PRC NO. 0078960 DATE: 01-05-2026
PTR NO. _____ PLACE: PAMPANGA
POSITION: SENIOR PROJECT PLANNING OFFICER
DIVISION: PLANNING & DEVELOPMENT

THESE DRAWINGS AND SPECIFICATIONS, AS INSTRUMENTS OF SERVICE, ARE THE INTELLECTUAL PROPERTY AND DOCUMENTS OF THE ARCHITECT. ANY UNAUTHORIZED DUPLICATION OR REPRODUCTION, IN WHOLE OR IN PART, WITHOUT THE WRITTEN CONSENT OF THE ARCHITECT IS STRICTLY PROHIBITED.
R.A. 9266, ART IV SEC 33.

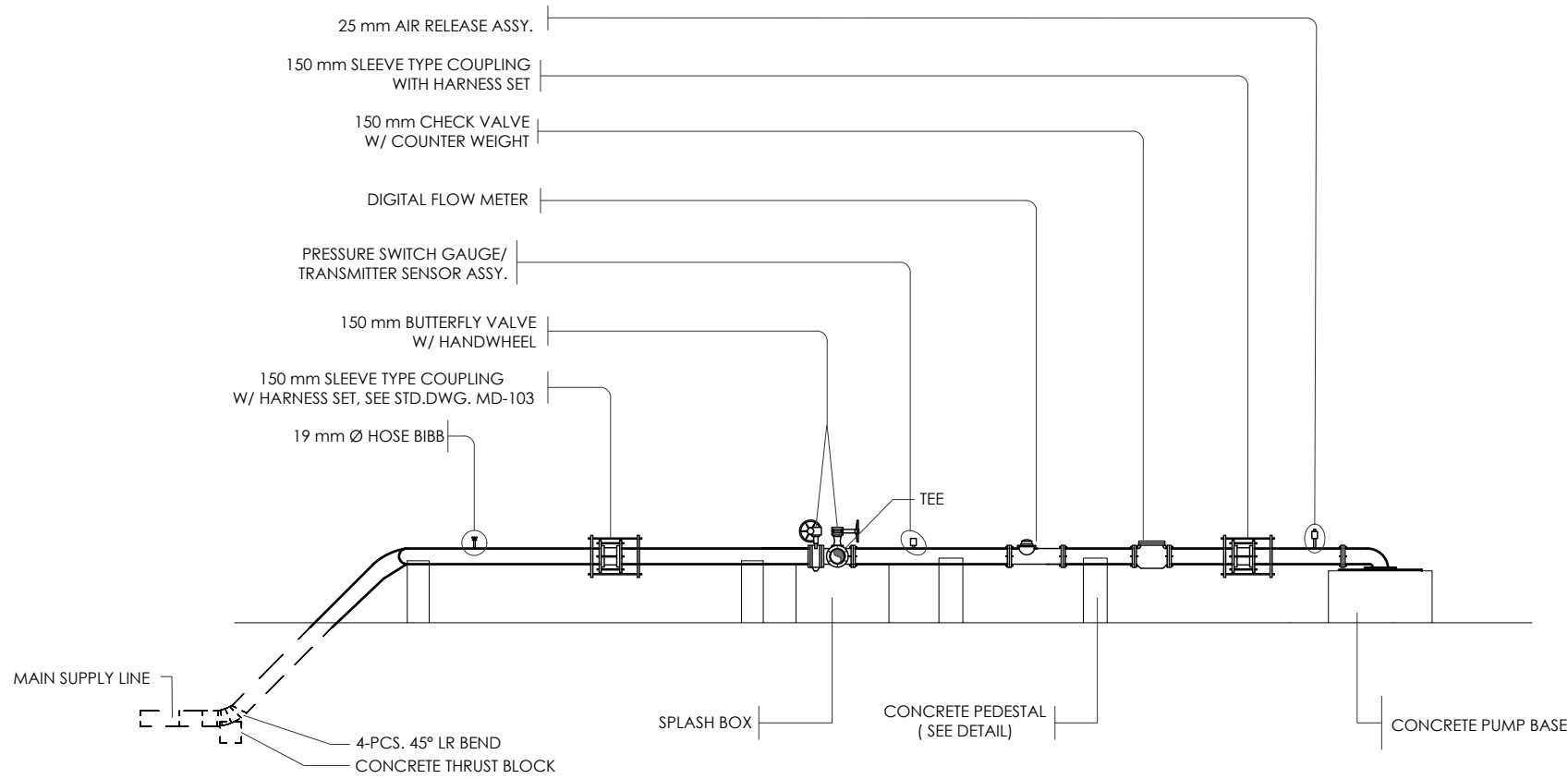
PROJECT NAME:
ELECTRO-MECHANICAL
LOCATION:
RAMAR VILLAGE, CITY OF SAN FERNANDO, PAMPANGA

RECOMMENDED:
AR. ROCKY M. DUNGCA
DIVISION MANAGER
PLANNING AND DEVELOPMENT DIVISION
ADDRESS:
B. MENDOZA STREET, BRGY. SANTO ROSARIO, CSFP

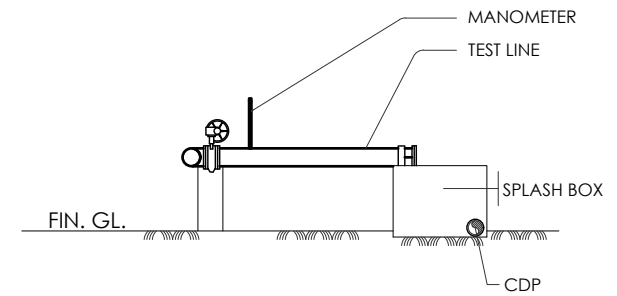
APPROVED:
ENGR. NELSON G. LINGAT, DPA
GENERAL MANAGER
CITY OF SAN FERNANDO WATER DISTRICT
ADDRESS:
B. MENDOZA STREET, BRGY. SANTO ROSARIO, CSFP

REVISION:
SHEET CONTENT:
ELECTRO-MECHANICAL LAYOUT & DIAGRAM

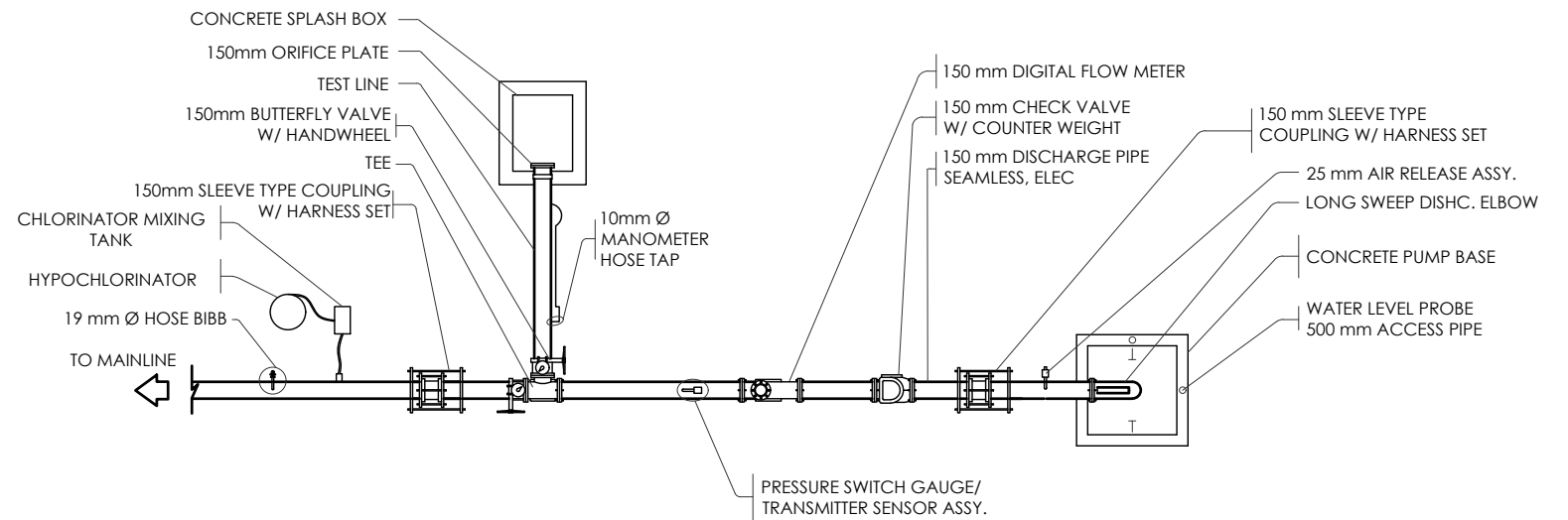
CAD BY:
DESIGNED BY:
CHECKED BY:
DATE:
SHEET NO.
2
M-2



SECTION A-A
NOT TO SCALE



SECTION B-B
NOT TO SCALE



PLAN VIEW
NOT TO SCALE



CITY OF SAN FERNANDO WATER DISTRICT
B. MENDOZA ST., STO. ROSARIO, CITY OF SANFERNANDO, PAMPANGA

ENGINEER:
JOSE S. GALICIA JR., RME
ENGINEER
PRC NO: 0078960 DATE: 01-05-2026
PTR NO: OFFICE SAN FERNANDO PAMPANGA
POSITION: SENIOR PROJECT PLANNING OFFICER
DIVISION: PLANNING & DEVELOPMENT

THESE DRAWINGS AND SPECIFICATIONS, AS INSTRUMENTS OF SERVICE, ARE THE INTELLECTUAL PROPERTY AND DOCUMENTS OF THE ARCHITECT. ANY UNAUTHORIZED DUPLICATION OR REPRODUCTION, IN WHOLE OR IN PART, WITHOUT THE WRITTEN CONSENT OF THE ARCHITECT IS STRICTLY PROHIBITED.
R.A. 9266, ART IV SEC 33.

PROJECT NAME:
DISCHARGE LINE ASSEMBLY
LOCATION:
RAMAR VILLAGE, CITY OF SAN FERNANDO, PAMPANGA

RECOMMENDED BY:
AR. ROCKY M. DUNGCA
DIVISION MANAGER
PLANNING AND DEVELOPMENT DIVISION
ADDRESS:
B. MENDOZA STREET, BRGY. SANTO ROSARIO, CSFP

APPROVED BY:
ENGR. NELSON G. LINGAT, DPA
GENERAL MANAGER
CITY OF SAN FERNANDO WATER DISTRICT
ADDRESS:
B. MENDOZA STREET, BRGY. SANTO ROSARIO, CSFP

REVISION:
SHEET CONTENT:
DISCHARGE LINE ASSEMBLY

CAD BY:
DESIGNED BY:
CHECKED BY:
DATE:
3
M-3

